


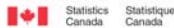


Longitudinal and International Study of Adults

Lynn Hamilton, Analyst
James Hemeon, Analyst
Income Statistics Division, Statistics Canada



March 24, 2017

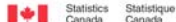


Longitudinal and International Study of Adults (LISA)

- A Canadian longitudinal social survey;
- Sponsored by Employment and Social Development Canada (ESDC);
- Developed to provide longitudinal information on labour market, education, training/skills, health, and family experiences.

2

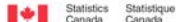
28/03/2017

 **Canada**

LISA reference period, sample

- Two-year reference period
 - Collection in 2011/12, 2014, 2016
- Sample:
 - Members of 2011/12 responding households
 - New household members
 - Children born/adopted to 2011/12 members
 - Data collected from individuals age 15 years +

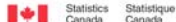

3 28/03/2017

 **Canada**

Core Survey Content

• Geography	• Retirement
• Education	• Caregiving
• Labour Market	• Family & Children
• Skills & Training	• Satisfaction
• Health	• Life Events
• Disability	

4 28/03/2017

Theme Survey Content

LISA 2012	LISA 2014	LISA 2016
<ul style="list-style-type: none"> • PIAAC • Languages in the workplace • Everyday skills • Problem solving 	<ul style="list-style-type: none"> • Marital History • Family Origins • Personality Characteristics • Height & Weight 	<ul style="list-style-type: none"> • Postsecondary History • RESPs • Work Integrated Learning • Assets and Debt

5 28/03/2017




Data Availability

- **LISA 2012**
 - Interviewed in late 2011 and early 2012
 - 23,926 respondents
- **LISA 2014**
 - Interviewed in 2014
 - Response rates:
 - **PIAAC: 71.7%**
 - **LISA: 70.0%**
 - 19,178 respondents

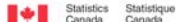

6 28/03/2017




Administrative Data Linkages

- T1 Family File (T1FF)
- Employer File (T4)
 - Business Register (BR)
- Pension Plans in Canada (PPIC)
- Longitudinal Immigration Database (IMDB)

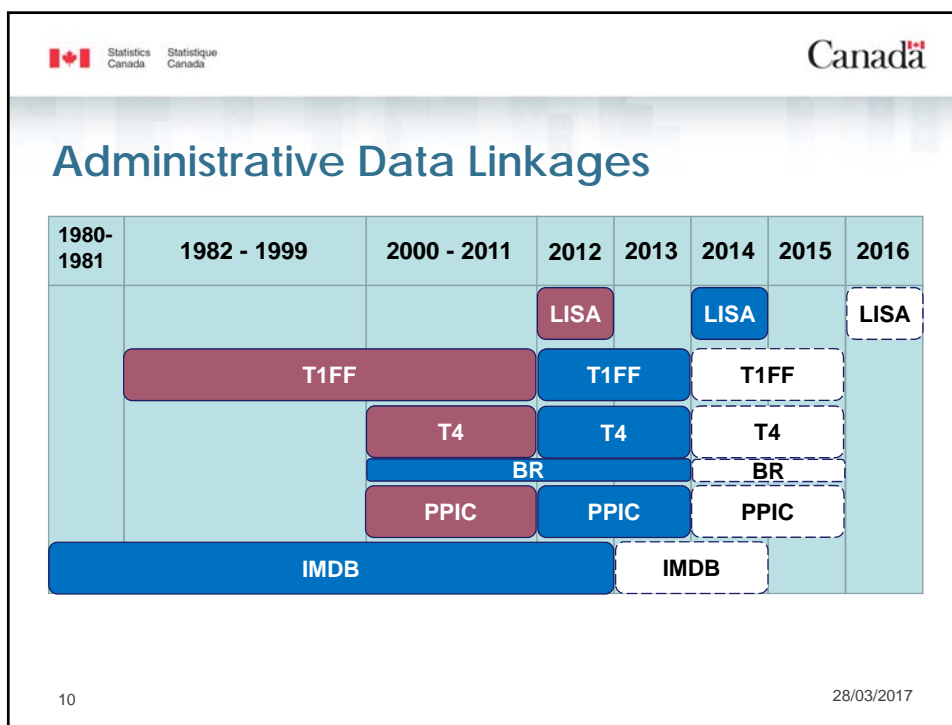
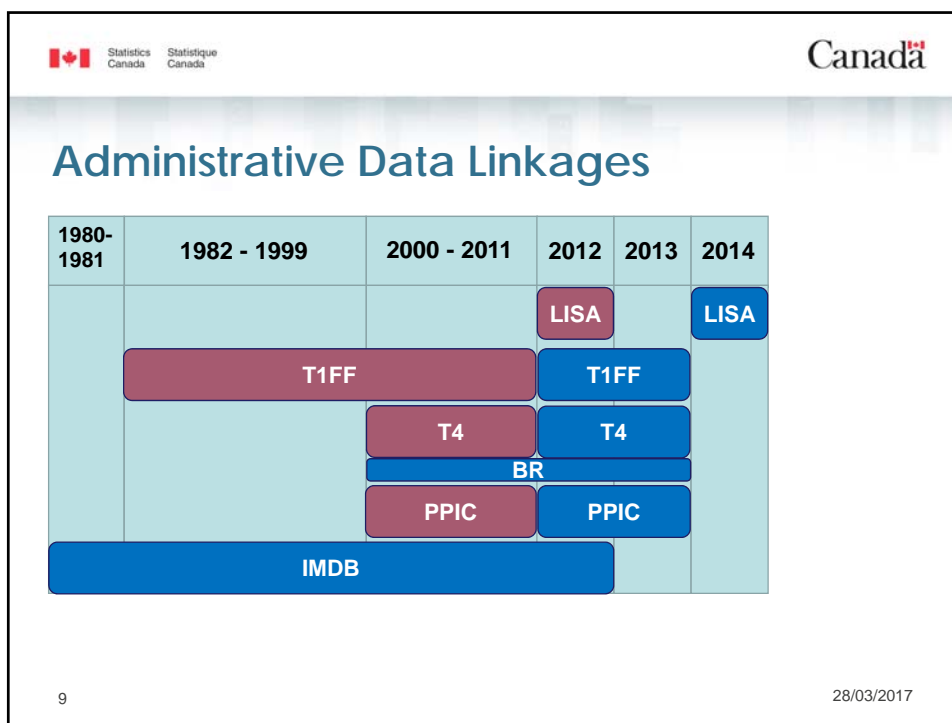
7 28/03/2017

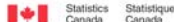




Administrative Data Linkages

1982 - 1999	2000 - 2011	2012
		LISA
T1FF		
	T4	
	PPIC	

8 28/03/2017




Documentation

- Quick Start Guide
- User Guide
- Merge Guide
- Questionnaire
- Data Dictionaries
- Research paper series
 - [Using the Program for International Assessment of Adult Competencies](#) direct measures of skills in the Longitudinal and International Study of Adults (Situ, 2015)
 - [Historical Data Linkage Quality: The Longitudinal and International Study of Adults, and Tax Records on Labour and Income](#) (Hemeon, 2016)

11 28/03/2017

Research using LISA

- 33 approved RDC proposals using LISA data
- Examples of proposals include:
 - An Assessment of Essential Skills Requirements in the Workplace
 - Post-secondary education participation, labour market participation and income profiles of people with disabilities in Canada (1999-2012)
 - Lifetime earnings by field of study and education level
 - What Makes You Switch Jobs? A Study of the Factors Influencing Inter-Occupational Mobility.

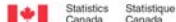

12 28/03/2017




Upcoming

- **LISA 2016**
 - Interviewed in 2016
 - Preliminary response rates:
 - **PIAAC: 63.3%** (*LISA 2014: 71.7%*)
 - **LISA: 61.2%** (*LISA 2014: 70.0%*)
 - To be released in 2018
- **LISA 2018**
 - Interviews will take place in 2018
 - To be released in 2020

13 28/03/2017

Questions or comments

<p>Lynn Hamilton Analyst, Income Statistics Division Statistics Canada lynn.hamilton@canada.ca 613-410-4275</p>	<p>James Hemeon Analyst, Income Statistics Division Statistics Canada james.hemeon@canada.ca 613-854-9824</p>
---	--

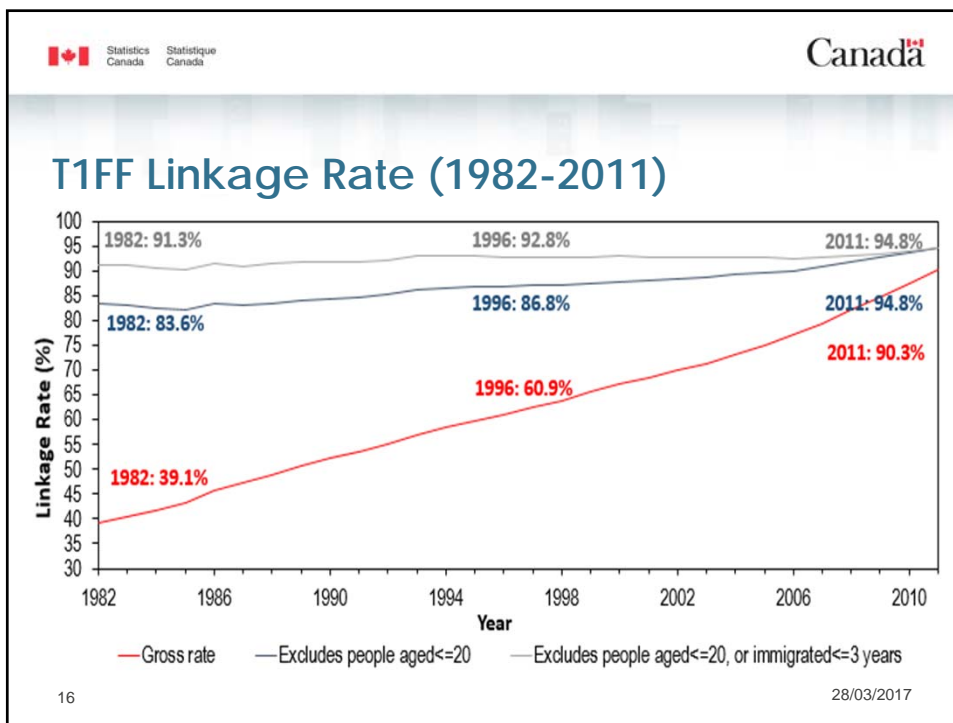
14 28/03/2017




Survey Content

LISA 2012	LISA 2014	LISA 2016
<ul style="list-style-type: none"> • Geography • Education • Labour Market • Income • Skills • Health • PIAAC 	<ul style="list-style-type: none"> • Geography • Education • Labour Market • Income • Skills & Training • Health • Mental Health (K10) • Disability • Retirement • Personality (Big Five Index) • Marital History 	<ul style="list-style-type: none"> • Geography • Education • Labour Market • Income • Skills & Training • Health • Mental Health (K10) • Disability • Retirement • Assets and Debt • Postsecondary Education History

15
28/03/2017



		5yr	10yr	15yr	20yr	25yr	30yr
1982	%	85.3%	80.6%	78.9%	77.3%	75.9%	74.3%
	N	7,531	7,123	6,966	6,831	6,700	6,564
1987	%	85.70%	83.20%	81.50%	79.70%	78.10%	
	N	9,582	9,307	9,112	8,918	8,735	
1992	%	88.8%	86.2%	84.0%	82.1%		
	N	11,606	11,265	10,978	10,733		
1997	%	89.3%	86.6%	84.5%			
	N	13,305	12,889	12,579			
2002	%	89.2%	86.7%				
	N	14,798	14,371				
2007	%	89.7%					
	N	16,568					